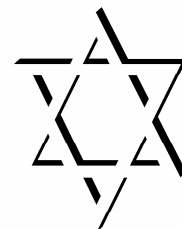




SHALOM NEWS

BETH ISRAEL



THE JEWISH CONGREGATION OF SUN CITY CENTER

SUMMER 2014

Summertime!

This is the combined June/July issue of Shalom News. Many of you will be traveling this Summer, and we wish you a safe trip and a safe return. Have a wonderful time! If you are staying in this area, we hope to see you often.

Typically the summer issue does not have a calendar of events but this year, since there is so much going on, you will find calendars for June and July on pages 18 and 19 respectively. Please watch your email or check out the calendar on our JCSCC.org website for updates and additions, or pay close attention to the announcements at Shabbat services.



IN THIS ISSUE

ASK THE RABBI	11
BIRTHDAYS/ANNIVERSARIES	10
BOOK OF REMEMBRANCE	22-23
INFO	
CALENDAR OF EVENTS	18-19
CONTRIBUTIONS	12- 13
JOB DESCRIPTIONS	21
LIBRARY NEWS	4
MEMBERSHIP	4
MEN'S CLUB	14
ONEG SPONSORS	16
PRESIDENT'S MESSAGE	3
PROGRAM	4
RABBI'S DESK	2
RITUAL	5
SISTERHOOD	8
TRIBUTE CARDS	16
WAYS & MEANS	9
Yahrzeits	15

Shalom News

Published monthly by

Beth Israel

The Jewish Congregation

Editor Delyse Axinn

(813) 633-2548

E-mail

ShalomNews@jcsc.org

Web www.jcsc.org

Beth Israel, The Jewish Congregation of Sun City Center, is affiliated with the Union for Reform Judaism



FROM THE RABBI'S DESK

Rabbi Carla Freedman

When you read this, Shavuot will be at hand...it begins Tuesday, June 3 at sunset, and **our Shavuot service on Thursday, June 5, the second day of the festival will also include a Yizkor (Memorial) Service.**

Shavuot is a sacred occasion mandated by the Torah in a number of locations (Ex. 34:22; Ex. 23:16; Deut. 16:10-12). It is mentioned as one of the three Pilgrimage Festivals (Pesakh and Sukkot being the other two) for which all adult male Jews were required to present themselves, with offerings for God, at the Temple in Jerusalem. All of these occasions were probably originally

Canaanite harvest celebrations (barley is harvested in the early spring, wheat in the late spring, and other produce in the fall) which the Israelites adopted and adapted to their own purposes by connecting them to the narrative of the exodus from Egypt, the foundational event of the Judaism. Thus, the agricultural aspect of Pesakh has been completely submersed by the liberation story while Sukkot, which does refer to the huts/booths that our ancestors dwelt in on their trek from Egypt to Canaan, also refers to the huts they later built in their fields for the harvest season.

Shavuot, on the other hand, is in effect the climax of the liberation narrative, since it celebrates the giving of the Torah at Sinai. It closes the bracket of the seven weeks between the exodus and the revelation, indicating that Pesakh celebrates the *redemption* of the Israelites from slavery and Shavuot celebrates the *purpose* of that liberation, namely to bring God's laws and high moral standards into the world.

It was customary in ancient times, to bring the first fruits of the harvest to the temple, and later the practice became the bringing of flowers to decorate the synagogue with the signs of spring. As with Pesakh, today the agricultural aspect of Shavuot is hidden beneath the theological framing of the festival.

The rabbis of old taught that our ancestors arrived at Mt Sinai after seven weeks of travelling from Egypt. They used various sources within the Torah itself (the exodus narrative in Exodus, and the itinerary given in Numbers 33) to plot that journey, though today scholars offer various interpretations of the route taken and the location of Mt Sinai itself (in the original Plaut *Torah, A Modern Commentary*, on page 378, there is a map with 4 different routes and 8 different possible locations of Mt Sinai!). What all the options agree upon is that some transformative event took place at Sinai.

That event is celebrated as the occasion when God revealed the Torah to the Israelites, via Moses. The Torah itself tells us that Moses received the Ten Commandments there, but Jewish tradition has always referred to the event as *z'man matan torateynu*, the time of the giving of our Torah. Today, many scholars of all faiths would argue that the Torah (Genesis, Exodus, Leviticus, Numbers, Deuteronomy) is a skillfully edited document made from at least four different source materials, each with its own agenda and identifying characteristics, to which neither God nor Moses made any contribution. The scholars also consider the Torah a much more recently completed document than the "Torah at Sinai" theory would allow (scholars date the Sinai event to around 1250 BCE, while the "human authorship" theory would date its completion to around 450 BCE).

Regardless of such a contention, it is indisputable that the Torah has been the guiding light of the Jewish people for millennia. Just look at the immense collection of commentaries on the Torah, dating back to the earliest of the rabbis (nearly 2000 years ago!), and you can see how this book, of whatever provenance, has been used to sharpen the Jewish intellect throughout our history.

Shavuot is celebrated in a couple of ways. Aside from the obligatory worship service (ours will be on June 5 at 10:00 am), there is the custom of serious study the night before, called *tikkun lei Shavuot*, a correction of the eve of Shavuot (because legend has it that the Israelites were so deeply asleep the night before the Torah was given that they had to be awakened with the rumbling of the mountain and the sound of the shofar...so we stay up all night...or at least some Jews do...to make up for that). We will gather on **Wednesday, June 4 at 8 pm for a short study session**....we'll read the first and last verses of each book of the Torah.

It is also the custom to eat only dairy food on Shavuot, because when the Israelites received the Torah, that included the dietary laws, and when they came home after the event at Sinai, they had no meat that would now qualify as acceptable (yes...that *IS* the reason for eating only dairy on Shavuot). **So on Wednesday evening, we'll enjoy ice cream sundae as we study Torah!!**

Please join us for these two observances of Shavuot.....Wednesday evening, June 4 and Thursday morning, June 5.



PRESIDENT'S MESSAGE

ELLEN STEIN

He was gentle, courageous, steadfast, and a dynamo when something needed to be done. As devoted a temple member as ever there was, as true to his God as a man could be, this was the Richard Axinn I knew. Hard to get to know but once you discovered the gentle human being he truly was, you had an ally forever. One didn't always agree with his viewpoint but that didn't dissuade him from what he believed in. Conscientious and conservative were his watchwords, sometimes to a fault, but stick to his guns he would, like it or not. Many times I would stop by the office to pick up mail or phone messages and there he would be working at something or other. Impossible to replace, the love he bore for both Beth Israel and his own family were apparent. It was palpable. Thanks to all who joined in the service to say good-bye to him, so ably led by Rabbi Carla. Richard will be sorely missed.

On another subject, Aretha sang about it in her song. We were all taught by our mothers to have it. Our schoolteachers demanded it, whether we liked it or not. The word is "RESPECT", one of the most precious and intangible tributes one can receive. It is one of those coveted human qualities you can't buy, borrow or steal - it must be earned.

But what about respect for intangible objects? How does this compare with our demeanor at Beth Israel? Do we feel it as we walk through the entrance doors? Do we approach and touch the cover to our beloved *Torah* with it? Do we keep it in mind for those nearby as we recite the familiar prayers during services? Are we dressed appropriately for entry into sacred space? Aside from passing remarks by Rabbi Carla, we never really have touched on these matters. However, you must know by now that in some way a dress code already exists. So, the first thing upon which we must agree is that when we enter Beth Israel (or any other place of worship), we step into special space, sacred ground, including and especially on *Shabbat*. As the *Torah* is being processed through the Sanctuary, are we not expected to respectfully follow it with our eyes and bodies? This is not a moment for social chitchat. Are we not expected to acknowledge in song the passing by of our most revered object? As we recite the weekly service, are we disturbing the people around us with whispered chatter? Do not deceive yourself. Someone within earshot may be annoyed by your disrespectful intrusion. A-a-a-nd, our Sabbath Queen is probably not intrigued when we choose to tread on sacred ground in our cut-off pants. One assumes that when entering a synagogue, it is with reverence, after selecting clothes honoring the occasion and place. If a chord has been struck, so be it!

Oh where, oh where have our *Mishkan Tefilah* prayer books gone! If you have borrowed one with the intention of returning it, please do so as soon as possible or, in the alternative, a \$25 donation for each book would be acceptable. If you know of their whereabouts, please help them find their way back to Beth Israel.

With the untimely departure of our beloved Eveready battery, Richard Axinn, a new Facilities committee is now in place consisting of Bernie Katz, Ken Rodman, BobWhiteman, and Gil Daniels, with Dick Marshall heading up the committee and several unnamed members on call. For any problem at Beth Israel of which you become aware, call Dick Marshall on his cell phone and he will contact the proper person to deal with it. We wish them all luck in their endeavor.

Happy Summer to all. Until we meet again, Ellen

PROGRAMS AT BETH ISRAEL
CHERYL KAPLAN, PROGRAM DIRECTOR
(813) 633-3188
Iquit2010@yahoo.com

On June 22, 2014 at 3:00 pm, we will be showing a film, **Paper Clips**, which is a wonderful film that began as a lesson about prejudice, but turned into something totally different and heartwarming. The film was loaned to us by Laura Reuterfors and I want to thank her for her generosity. There will be popcorn and soda served and the admission fee will be \$2.00 per person. Please plan on coming and enjoying a wonderful film.

Trivia Night will be once again enjoyed by many at Beth Israel on July 12, 2014 at 7:00 PM in the social hall at the temple. The trivia will be of the Baby Boomer Generation! Even though you may not be a true baby boomer, you must have lived through that era, so this is going to be a fun night for all who attend. Start getting your teams of 8 together and watch for my email flyer coming out in June concerning this program.

If you have ideas or questions, please do not hesitate to contact me.

MEMBERSHIP REPORT
Shelly Grossman & Sheila Rubinstein
Co-Directors

On May 4 we had a wonderful Dairy Pot Luck Shabbat Dinner. All of the people who attended went into services very happy and with full stomachs. Thank you again to all our talented cooks!

SAVE THE DATE!!! Our next function will be on Friday, August 15 - a Summer Salad Shabbat Dinner catered by Sweet Tomatoes. This has always been well attended and delicious. Further information will be coming soon. Please look for it.

We both wish you a good summer and safe and happy travels

Beth Israel Library News

June, 2014

Library Update:

Check out the new shelf layout and check out something for summer reading. If you can't find the category you're looking for, check out the diagram on the bulletin board.

Your donations of books, media and ritual items are always welcomed. Leave donations at the library or in the genizah box in the foyer. Anything the library cannot use is recycled. In May 6 books were given to SouthShore Friends of the Library. In addition, over 60 books and records went to the Norman Jewish Library in Tampa along with 50 genizah prayerbooks and ritual items for burial.

Next Library Committee Meeting

Monday, June 16, 2014, 10 - 12

"Fill the Void" - 2012 release from Israel; 90 min. DVD. An intimate look into the world of Israel's ultra-Orthodox Hasidic community. Totten Tomatoes says "this film is graceful, complex, and beautifully layered, a sympathetic portrait of an insulated culture by exploring universal themes." And by the way it won seven [Israeli Academy Awards](#) at the Venice Film Festival.

Contributions to the Library Fund

Condolences, In memory of Richard Axinn - From Kathleen and Douglas Salmon, Bernie and Arlene Cohen

Happy Birthday and Anniversary to Nelson and Ida Grimm - From Bob and Cyrille Cobe

Happy Birthday to Wilma Levine, Robert Guzinsky, Maggi Guzinsky, Ellen Stein - From Bernie and Arlene Cohen

Happy Anniversary to Bob and Tzippy Whiteman, Larry and John Cohen - From Bernie and Arlene Cohen

Mazel Tov on Reaffirmation of Marriage to Simone and Ralph Shaw - From Bob and Cyrille Cobe

Your thoughtful contributions enhance our library for seniors. To make a contribution please send checks made out to Beth Israel Sisterhood to Arlene Cohen, 2411 Kensington Greens Drive, SCC, FL 33573. Suggested minimum \$5.00.

Thanks for supporting our library! Cyrille Cobe

RITUAL DIRECTOR

FRED LEVINE

ritual@jcsc.org



As I wrote in the May issue of Shalom News, the Ritual Committee has been very busy planning for the High Holy Days with some really exciting results.

First: We will be having Cantor Riselle Bain as our cantor for the High Holy Days. For those of you who are not familiar with Cantor Bain, she was the Cantor at Congregation Shaarei Tzedek in Tampa for many years. She has also has been at our Temple to conduct a service.

We did formalize the schedule of services to be held during the High Holy days and they will be sent out to the congregation later in the summer.

The CPPC committee is in the process of upgrading our visual / audio schematics in the social hall for overflow seating during the holidays. New large screen HDTV's and a new camera are in the process of being obtained and installed.

Additional information regarding the Erev Rosh Hashanah dinner and the Break the Fast meal will be forthcoming. We are awaiting final contract numbers from the caterers for pricing and times.

The festival of Shavuot starts on Tuesday evening, June 3rd. On Wednesday evening, June 4th, from 8 PM to 9 PM, we will be having a "Sundae – Shavuot – Wednesday", Giving of the Torah teaching and learning session with Rabbi Freedman, along with a "Make Your Own Sundae" dessert session. Reservations for this event are a must – since we must know how many are attending and to purchase enough ice cream and toppings. Reservations must be made by Sunday, June 1st by emailing Fred Levine at flevine@tampabay.rr.com or by calling 813 672 7656. You don't want to miss out on all of the fun, learning and desserts.

Shavuot commemorates the anniversary of the day G-d gave the Torah to the entire nation of Israel assembled at Mount Sinai, although the association between the giving of the Torah (*Matan Torah*) and Shavuot is not explicit in the Biblical text. The holiday is one of the *Shalosh Regalim*, the three Biblical pilgrimage festivals. It marks the conclusion of the Counting of the Omer, and its date is directly linked to that of Passover. The Torah mandates the seven-week Counting of the Omer, beginning on the second day of Passover, to be immediately followed by Shavuot. This counting of days and weeks is understood to express anticipation and desire for the giving of the Torah. On Passover, the people of Israel were freed from their enslavement to Pharaoh; on Shavuot they were given the Torah and became a nation committed to serving G-d. The word Shavuot means weeks, and the festival of Shavuot marks the completion of the seven-week counting period between Passover and Shavuot.

REMEMBRANCE GIFTS

If you are thinking of a way to remember a loved one, don't forget our Memorial plaques or Bricks at the Meditation Garden. Call the office at 634-2590 and leave a message.

The cost of each of these items is as follows:

Prayer Book \$35

Leaf on Tree of Life \$100

Plaque on Tree of Life \$275

Chair Plaque \$75

Memorial Plaque - member price \$275

Memorial Plaque - non-member \$350

Bricks at Meditation Garden \$100

Discover the FREEDOM ADVANTAGE



Fashionable Resort Living:

Clubs, Library, Trips, Woodworking Shop, Graduate School for Seniors, Billiards, Beauty Parlor/Barber Shop



Chef Prepared Meals:

Traditional and Eclectic Menus, Five Distinctive Dining Rooms, the French Café or the Pub



Sports and Recreation:

18-Hole Executive Golf Course, Pickleball, Bocce Ball, Fitness Rooms, Indoor and Outdoor Swimming Pools

Peace of Mind:

Maintenance-Free Lifestyle, Care for Life Guarantee, Predictable Long-Term Care Cost, Home Purchase Program

For more information, call 1-877-769-8056.



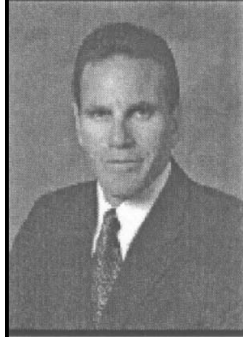
ALL THE PLACES LIFE CAN BE™

A Life Care Community
1010 American Eagle Boulevard, Apt. 114
Sun City Center, Florida 33573
brookdale.com

Sponsored by the Retired Officers' Corp. Open to folks from all walks of life.

© Reg. U.S. Patent and TM Office. ALL THE PLACES LIFE CAN BE is a trademark of Brookdale Senior Living, Inc. (NYSE: BKE). 10/10/07 10/10/07

WE MAKE HOUSE CALLS



Charles D. Segal, LFD



Since 1986

Segal Funeral Home, Beth David Chapel is committed to providing expert and convenient service at your time of need. All arrangement details handled with proficiency and sensitivity in the comfort of your Sun City Center home.

(813) 874-3330

Member of the Jewish Funeral Directors of America



REY MUNOZ

LANDSCAPING & ODD JOBS
REFERENCES AVAILABLE

(813) 516-3197

TRIMMING / PLANTING
PROPERTY MAINTENANCE

PRESSURE WASHING
WINDOW CLEANING

IMPORTANT MESSAGE ABOUT BADGES

PEOPLE WHO WEAR PACEMAKERS SHOULD NOT BE WEARING MAGNETIC NAME BADGES!

If you have a magnetic badge and wear a pace-maker, please return your badge to the temple membership committee and they will have the magnet replaced with a pin.

For your finest real estate experience

GUARANTEED!!



With almost twelve years of experience and still ranking near the top in sales in the Century 21 Beggins office, Mel Fader is well prepared and ready to deliver the highest level of real estate services to you or someone you know. If you, or an acquaintance, is considering buying or selling a property, anywhere in the South County area, Mel will provide any assistance that is needed- anything from searching for a new home to preparing an evaluation and counseling for the sale of an existing one. Referrals are always appreciated. Please call at any time.

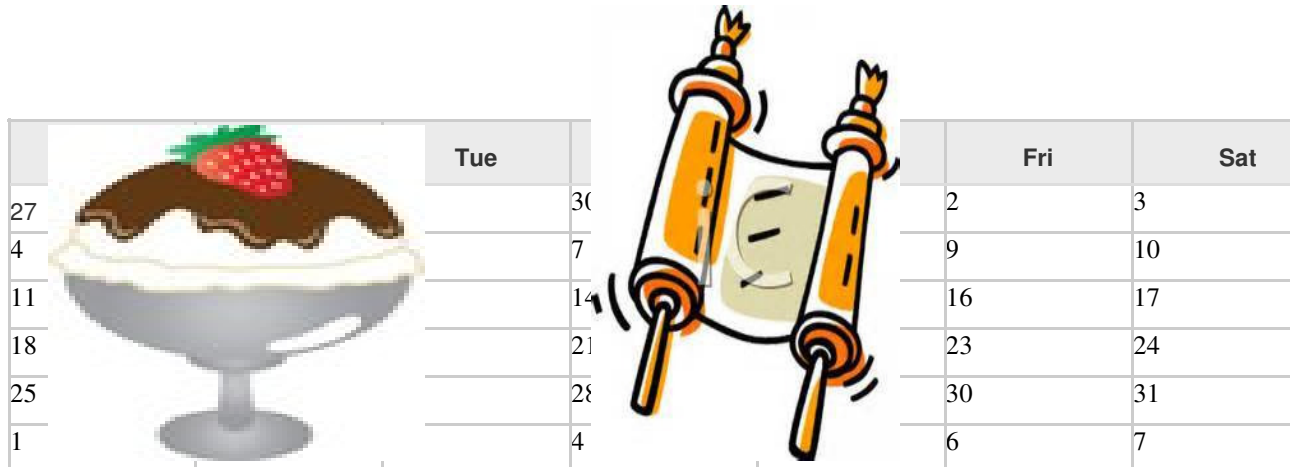


Cell 813-508-0083

Home 813-633-9736

Office 813-634-5517

melfader@century21beggins.com



COME JOIN US FOR SUNDAE-SHAVUOT-WEDNESDAY

**WE'RE GOING TO CELEBRATE THE
GIVING OF THE TORAH
WITH SOME TORAH TEACHING, LEARNING
WITH RABBI CARLA FREEDMAN
AND SAVOR IT ALL WITH SOME
DELICIOUS ICE CREAM SUNDAES**

WEDNESDAY: JUNE 4, 2014

TIME: 8PM TO 9PM

THE COST: \$0, NADA, ZILCH, BUPKIS

RESERVATIONS ARE A MUST BY JUNE 1ST



Spotlight on Sisterhood



**SANDRA HURWITZ,
SISTERHOOD PRESIDENT**

Previously I wrote about heroic women of the Bible. I give you another example of a woman's role in our history. She was Noah's wife and is not named in the Bible, but she still played an important role in Jewish History. (The following information is from womeninthebible.net) This is the story of a woman with extraordinary patience, and extraordinary love for her husband. How else to explain the fact that she went along with a task that was preposterous, to say the least? Noah may have been nominal head of the family, but he could only have achieved what he did with the support of his family - and the leader of this family was his wife. Noah was given specific instructions on how to build a gigantic boat, the Ark. Speed and destination were completely in the hands of God. This is where the wife of Noah first appears. Somehow she was able to accept that this strange, crazy plan of her husband's was genuine and feasible. She must have been a woman of patience and vision, backing up her husband and convincing her sons and daughters-in-law to do the same. Once the flood was over the four women of Noah's family faced a desolate world. Everything was destroyed. There was no home to return to, no neighbors to share the grief, no familiar customs to observe. The desolate world had to start again from scratch, and the hardship these women faced must have been extreme. Had they given in, succumbed to the disaster and refused to go on, God's plan would not have succeeded. The main theme of this story is to trust in God, no matter what comes. God is watching and looking after you, even when it seems as if you are alone. Look after the earth. If we don't, Nature will be unleashed against us. If we are irresponsible and live only for today, we will be wiped out. Even one person or one family can make a difference. Never think you are unimportant in God's plan.



AT LEFT: Judaica Shop donates to Sisterhood. Sandra Hurwitz accepts a check from Sandra Abramson.

PICTURES FROM SISTERHOOD'S CLOSING LUN CHEON, MAY 6



Sisterhoods's newest members,
Fran Pine and Barbara Nova



Sandra Hurwitz thanks Board Members Barbara Grossman, Nina Malinak and Rochelle Lafer



Sandra Hurwitz with new Board Members, Debbie Boyarsky, Barbara Grossman and Rochelle Lafer



WAYS AND MEANS

CAROL BALENT, DIRECTOR

SAVE THE DATE!

DATE: August 30, 2014

LOCATION: Community Hall, Sun City Ctr.

Further information coming soon...

SUPPORT BETH ISRAEL

It is through the generous contributions of our congregational family that Beth Israel is able to maintain our programs and nurture the spiritual lives of our members. The ways & means committee needs your additional support because dues only cover a small percentage of running our Temple. Please assist in any way you are able to make the financial needs of our Temple easier to achieve.

Please continue the donation of "NEW" item/items that you have at home and will never have use for. Please leave your items in the Temple office marked Carol Balent. Also, add your name with your item so you can be thanked appropriately.

If you are going to be in town, attend our event; sell tickets to your neighbors and friends. Share in on the excitement so our fundraiser will be hugely successful.

Please help to support your temple and lend a helping hand.

In order to keep dues down **WE NEED YOUR SUPPORT!** We also need volunteers to work at our event.

An email list for be sent out before long.

THANKS SO MUCH,
CAROL BALENT

JUNE AND JULY ANNIVERSARIES



Jun 03 Stanley & Judy Zirotsky
Jun 10 Nelson & Ida Grimm
Jun 12 Donald & Sandra Davidson
Jun 13 Stephen & Alison Levine
Jun 14 Nate & June Bell
Jun 14 Jerome & Brenda Levy
Jun 16 Allen & Marion Sharkey
Jun 18 Pat & Michele Patterson
Jun 18 Martin & Sandra Hurwitz
Jun 21 Alan Beth & Candace Stanlake
Jun 21 Andy & Sandy Cohen
Jun 23 Richard Kravitz & Helen McAninch
Jun 25 Paul & Tess Silverman
Jun 26 Ram Meyuhas & Barbara Citrin
Jun 27 Lyn Safian & Stephen Blesofsky
Jun 27 Herbert & Roslyn Shapiro
Jun 29 Robert & Sheila Goldberg
Jun 29 Brenda & Doug Hantman
Jun 30 Richard & Barbara Grossman
Jun 30 Murray & Rochelle Homelsky
Jun 30 Lawrence & Lynnette Martasin
Jul 01 Naomi & Bruce Arnold
Jul 04 Robert & Lillian Solin
Jul 11 Ronni & Mark Neckes

CONDOLENCES

**Richard Axinn passed away on April 30, 2014,
the result of a traffic accident.**

**Elayne Grossman passed away on May 8, after
a long battle with pancreatic cancer.**

They will be sadly missed

May both their memories be a blessing

JUNE AND JULY BIRTHDAYS



Jun 4 Eileen Lebowitz	Jun 28 Donna Kates
Jun 05 Sid Goldstein	Jun 30 Andrew Greenfield
Jun 07 Robert Goldberg	Jun 30 Lawrence Martasin
Jun 07 Ilona Lobanov	Jul 01 Lillian Aaron
Jun 07 Addie Unterlack	Jul 03 Glorida Augenstein
Jun 11 Stuart Cohen	Jul 03 Richard Grossman
Jun 12 Joseph Birnbaum	Jul 06 Ram Meyuhas
Jun 13 Sandra Michelson	Jul 08 Joseph Sheff
Jun 17 Nina Block	Jul 08 Evelyn Weissman
Jun 17 Allan Klein	Jul 12 Mildred Kashuk
Jun 17 Joan Kramer	Jul 12 Elaine Levin
Jun 19 Joan Cohen	Jul 13 Idalea Rubin
Jun 19 Denise Rosen	Jul 14 Melvin Worth
Jun 21 Sherwood Rubin	Jul 15 Sandra Davidson
Jun 24 Joseph Graff	Jul 15 Stuart Offenbach
Jun 25 Deborah Schwalm	Jul 16 Ed Jacobs
	Jul 18 Jack Greenstein
	Jul 20 Eileen Shaw
	Jul 24 Larry Cohen
	Jul 26 Peggy Cohen
	Jul 27 Martin Dain
	Jul 28 Mel Fader
	Jul 31 Lynne Gordon

HONOR SOMEONE BY PLANTING TREES IN ISRAEL IN HIS/HER NAME

**IF YOU WANT TO PLANT
A TREE IN ISRAEL, CONTACT
ELIZABETH JACOBS AT 633-3073 FOR
MORE INFORMATION**

ASK THE RABBI

Question: Are rabbis bound by confidentiality?

Answer: Yes! Rabbis are, from Judaism's perspective, not technically "clergy" but are subject to all the rules and regulations that apply to clergy in this country (in other faiths, "clergy" acquire special powers and authorities through ordination; in Judaism that is not the case).

Clearly one of those rules is that clergy are expected to preserve the confidences of those who speak to them as "pastors" (shepherds). Thus, anyone who talks with a rabbi in private, and discloses something about him/herself, can expect that privacy to be preserved.

There is only one generally accepted exception to this, and that is when a clergyperson becomes aware of child abuse, either actual or potential; then the clergyperson has a legal obligation...as do teachers... to report this to the appropriate authorities.

I have always taken seriously the matter of congregant (or anyone's, really) confidentiality. I do not disclose to anyone what is told to me in confidence, and I do not even reveal that any given person has spoken with me, whether in confidence or not.

Here, that is made easier than in other places I have worked, because there are many times when no one else is in the building, so a person can meet with me in absolute privacy. To preserve privacy, I have met with congregants or others in places far removed from the temple or where temple members are unlikely to go.

So you can rest assured that if you choose to speak with me in confidence, I will protect your privacy and confidence absolutely.



A NOTE TO THE CONGREGATION FROM DELYSE AXINN

I hardly know how to begin to thank the wonderful, beautiful members of Beth Israel for the outpouring of love and support that you showed my family and me after the tragic accident that took the life of my husband Richard.

The number of people who attended the funeral was overwhelming, and then many of you drove down to the National Cemetery in Sarasota also. Thank you to all of you who attended the shiva services and to all who set up the refreshments following the services.

Thank you for the cards, the visits, the food, the phone calls, the hugs. Thank you for the words of condolence when there simply weren't any words that would suffice. Thank you for the many contributions to Beth Israel in Richard's memory. Thank you for the trees that were planted in Israel in his memory.

I received so much help from so many people, that I can't possibly list them all. You know who you are!

Richard's love of God and of Beth Israel were so strong that I believe I will always feel his presence in the temple's sanctuary.

SPECIAL CONTRIBUTIONS

As of May 14, 2014

Reported by Elizabeth Jacobs, Treasurer, and Paul Grossman, Financial Secretary

We appreciate the thoughtfulness of those who remember and honor their friends and loved ones through their generous contributions.

General Operating Fund

Sandra Abramson	In memory of Julius Kemp, grandfather of Sandra
Anonymous	Purchase of memorial plaque reserved for Delyse Axinn
Anonymous	Purchase of memorial plaque for Richard Axinn
Anonymous	In support of Beth Israel's landscaping project
Rabbi Phil & Jean Aronson	In memory of Richard Axinn, husband of Delyse Axinn
Barbara Aspis	Purchase of chair plaque for Chaim Garfinkel, age 6
James & Sheryl Ball	In memory of Richard Axinn, husband of delyse Axinn
Herbert Berman	In memory of Reba Berman, mother of Herbert
Charna Bogdany	Landscaping project in memory of Kevin Aaron, grandson of Charna
Charna Bogdany	Landscaping project in memory of Richard Axinn
Ronald Boyarsky	In memory of Abraham Boyarsky, father of Ronald
Fred & Marie Burnett	In memory of Elayne Grossman, wife of Morris Grossman
Herbert Cashvan	In memory of Anne Cashvan, wife of Herbert
Herbert Cashvan	In memory of Richard Axinn, husband of Delyse Axinn
Butch & Judi Cohen	In memory of Richard Axinn, husband of Delyse Axinn
Jay Cooper & Valerie Wolf	In memory of Richard Axinn, husband of Delyse Axinn
Martin Dain	In memory of Beatrice Dain, mother of Martin
Gil Daniels & Sharon Privitera	In support of Beth Israel's landscaping project
Floyd & Patricia Duncan	In memory of Richard Axinn, husband of Delyse Axinn
Eve Gilbert	In memory of Sarah & Isaac Freedman, parents of Eve
Sidney Goldstein	In memory of Harold Turchik, brother-in-law of Sidney
Shelly & Paul Grossman	In memory of Algernon Sivin, step-father of Shelly
Shelly & Paul Grossman	In memory of Richard Axinn, husband of Delyse Axinn
Shelly & Paul Grossman	In memory of Elayne Grossman, wife of Morris Grossman
Barbara & Richard Grossman	In memory of Richard Axinn, husband of Delyse Axinn
Jay Heimbold	In support of Beth Israel
Bonnie Duncan Highsmith	In memory of Richard Axinn, husband of Delyse Axinn
Martin & Sandra Hurwitz	In support of landscaping project in memory of Richard Axinn
Verdna Kelley	In memory of Richard Axinn, husband of Delyse Axinn
Hilde & Stephen Klein	In memory of Richard Axinn, husband of Delyse Axinn
Hilde & Stephen Klein	President's Discretionary Fund for "House of Mourning" booklets
Lewis Konigsberg	In memory of Morris Konigsberg, father of Lewis
Lewis Konigsberg	Prayer books with Best Wishes to good friends Nelson & Ida Grimm
Lewis Konigsberg	Prayer books with Best Wishes to good friends Bob & Cyrille Cobe
Rochelle & Bill Lafer	In memory of Freda Schwarz, mother of Rochelle
Rochelle & Bill Lafer	In memory of Richard Axinn, husband of Delyse Axinn
Alison & Stephen Levine	In memory of Paul Levine, father of Stephen

(Continued on following page)

(SPECIAL CONTRIBUTIONS - Continued from previous page)

Ilona Lobanov	In memory of Samuel Simon, father of Ilona
Nina Malinak	In memory of Richard Axinn, husband of Delyse Axinn
Hannah Malkin	In memory of Richard Axinn, husband of Delyse Axinn
Marlis Markovitz	In memory of Richard Axinn, husband of Delyse Axinn
Richard & Marsha Marshall	Landscaping project in honor of Simone & Ralph Shaw
Richard & Marsha Marshall	Landscaping project in memory of Richard Axinn
Jerome & Barbara Millstein	In memory of Sadie Millstein, mother of Jerome
Claire Mudrich	In memory of Samuel Simon, father of Claire
Gary & Joanne Natbony	In memory of Belle Natbony, mother of Gary
Carolyn & Keith Postle	In memory of Richard Axinn, husband of Delyse Axinn
Roger & Susan Potratz	In memory of Richard Axinn, husband of Delyse Axinn
Neal & Joy Rosen	In memory of Richard Axinn, husband of Delyse Axinn
Robert & Idalea Rubin	In support of Beth Israel's landscaping project
Sheila Rubinstein	In memory of Sherwood Shane, father of Sheila
Sheila Rubinstein	In memory of Sidney Rubinstein, husband of Sheila
Sheila Rubinstein	In memory of Martin Firestone, husband of Sheila
Roslyn & Herbert Shapiro	In memory of Sylvia Niedenthal, mother of Roslyn
Barbara Silver	In memory of Evelyn Goodman Fine, mother of Barbara
Barbara Silver	In memory of Leo Goodman, father of Barbara
Barbara Silver	In memory of Anna Brown, grandmother of Barbara
Lois Smerilson	In memory of Benjamin & Lillian Klempner, parents of Lois
Lois Smerilson	In memory of Harvey Smerilson, husband of Lois
Lois Smerilson	In memory of Richard Axinn, husband of Delyse Axinn
Lillian & Bob Solin	In memory of Blanche Rubin, mother of Lillian
Lillian & Bob Solin	In memory of Rita Glazer, sister of Lillian
Ellen Stein	In support of Beth Israel's landscaping project
Prayer Book Fund	
Sandra Abramson & Sid Goldstein	In memory of Richard Axinn, husband of Delyse Axinn
Sandra Abramson & Sid Goldstein	In memory of Elayne Grossman, wife of Morris Grossman
Library Fund	
Andrew & Linda Greenfield	In memory of Richard Axinn, husband of Delyse Axinn
Andrew & Linda Greenfield	In memory of Elayne Grossman, wife of Morris Grossman
Rabbi's Discretionary Fund	
Sandy & Andy Cohen	In memory of Loretta Orzuch, sister of Sandy
Sandy & Andy Cohen	In memory of Richard Axinn, husband of Delyse Axinn
Lewis Konigsberg	In memory of Lila Konigsberg, wife of Lewis
Ralph & Simone Shaw	in appreciation for their renewal of commitment ceremony
Bob & Cyrille Cobe	in appreciation of bimah honors

DIRECTED GIVING

This is the list of the funds which were set up to help ensure that your donations are put to use in the area of your choice. When making contributions to Beth Israel, the Jewish Congregation, whether it be for a Yahrzeit, a mitzvah, or for any other reason, please specify the fund (or funds) to which you would like your donation directed. Undesignated donations will go to the General Operating Fund.

GENERAL OPERATING FUND for a wide variety of operating needs

MAINTENANCE AND IMPROVEMENT FUND for ongoing

Temple maintenance and improvements

FURMAN/LEE FAMILY MEMORIAL/RABBI FUND for the generation of income to defray Rabbi's expenses

CANTOR FUND for the generation of income to defray the Cantorial Soloist's expenses

JANE FISHMAN KITCHEN FUND for kitchen improvements

PRESIDENT'S DISCRETIONARY FUND for assistance of community and individual needs

ARTHUR & SELMA PELLEGRINO STAINED GLASS WINDOW FUND for the addition of stained glass windows to the Henry Gibson Social Hall

CHAPLAIN EDUCATION FUND for providing educational opportunities

SCHOLAR-IN-RESIDENCE FUND for a weekend seminar

RABBI'S DISCRETIONARY FUND

MEN'S CLUB REPORT

Paul Grossman, President



Last month, in Shalom News, Neil Raphael, our Executive Vice President, wrote the following:

"The Club needs 5 volunteers to form a committee that will present nominations for the 3 Director positions that will become vacant at the end of this year. Elections for these positions will take place at the November annual Meeting. If you want to be part of this important process of selecting the nominees please contact Neil Raphael, Executive VP, at raphaelneil@aol.com who will chair this committee." **So, again, if you have an interest in serving on this committee AND / OR if you have an interest in serving as a Director, please contact Neil soon.**

I'm sure that the forty-two attendees at the Rays game, on May 21st, had a wonderful time. However, it was disappointing that we were unable to sell out the bus. At the Director's initial program planning meeting, we were not disheartened and will be exploring ways to make this type of event more appealing in the upcoming program year.

In the upcoming months, we will be sharing with you, our 2014-2015 program calendar. But here is one date, you may want to pencil in now, on your calendar.

Sunday, October 26th, at 10:30 AM – Bagels & Discovery

Our featured speaker will be Dr. Susan McManus, Professor of Political Science, at USF. In this election year, we will look forward to her view of the political landscape.

Stay tuned for more specific information and RSVP details.

JUNE and JULY YAHRZEITS

Yahrzeits are read at the Shabbat Service on the date listed which includes the yahrzeits for the following week-Friday through Thursday.

June 6, 2014

ELAINE BLUMENTHAL, Late Wife of ARTHUR BLUMENTHAL
MAX KARAS, Father of CHARNA BOGDANY
REVA GREENE, Sister-in-Law of HERB CASHVAN
NATHAN BLOOM, Grandfather of ANNETTE GARSON
ISAAC FREEDMAN, Father of EVE GILBERT
ROBERT KELLEY, Father-in-law of VERDNA KELLEY
ANNE KLEIN, Mother of STEPHEN KLEIN
STEPHEN KAPLAN, Brother of ROCHELLE LOWENTHAL
ANNE NECKES, Mother of MARK NECKES
MORRIS SCHAFFER, Father of SEYMOUR SCHAFFER

June 13, 2014

SHERWIN BYER, Son of ARTHUR BYER
SADYE KLEE GARDNER, Mother of JANET CORIN
JACK ROBENO, Father of ANNETTE GARSON
ANNE GROSSMAN, Mother of PAUL GROSSMAN
HENRY ROSENVAIG, Father of CHARNA HAIMES
BETTY MEYUHAS, Mother of RAM MEYUHAS
ETHEL SCHECHTEL, Mother of JUDY ZIROFSKY

June 20, 2014

HANNAH SIEGEL, Mother of LAURA BORAK
HARRY SIEGEL, Father of LAURA BORAK
HELEN EINHORN, Mother of LOUIS EINHORN
SYDELLE GREENSTEIN, Wife of ARNOLD GREENSTEIN
HELEN EINHORN, Grandmother of ROBIN KITZMILLER
ROSE ABRAMSON, Mother of DORIS RICHMAN
MOLLIE RUDIN, Mother of MARION SHARKEY
HUGO TAUSTINE, Father of TESS SILVERMAN
LILLIAN TEITELBAUM, Mother of DALE TEITELBAUM
SOPHIE HOLZBERG, Mother of SANDRA ZELIGMAN

June 27, 2014

LUCILLE WELK, Aunt of SANDY ABRAMSON
PEARL GOTBAUM, Friend of BARBARA ASPIS
BERNADETTE SCHMIDT, Mother-in-law of MARTIN DAIN
JACK KAUFMANN, Father of HARRIETT FREEDMAN
PAULA ROBENO, Mother of ANNETTE GARSON
JULUIS LESHIN, Father of LLOYD LESHIN
PHILLIP LOHN, Father-in-law of JULIA LOHN
EVELYN MICHAEL, Mother of JUDITH MICHAEL
BESSIE ROSEN, Mother of RONALD ROSEN
HELEN SHOOMAN, Mother of DIANE ROSENFELD
HENRIETTE LEVINE, Grandmother of VALERIE WOLF

July 4, 2014

WILLIAM BECKER, Husband of SHERRI BECKER
IRVING COOPER, Father of JAY COOPER
ELIAS BLAUSTEIN, Father-in-law of MORRIS GROSSMAN
ELIZABETH L. BRIDGES, Mother of ELIZABETH JACOBS
MURRAY GOTTESFELD, Father of CAROL KATZ
MARTIN KARP, Father-in-law of CHARLES MARGULIES
JEANNE KOHL, Mother of BARBARA NOVA
AVRAM SILVERMAN, Husband of MARCIA SILVERMAN
FRED HANDLEMAN

July 11, 2014

LOUIS ATKINS, Grandfather of MICHELLE ATKINS SCHAEFER
SAMUEL COHEN, Father of BUTCH COHEN
CHARLOTTE RACHLIN, Mother of JUDI COHEN
SAMUEL RACHLIN, Father of JUDI COHEN
PEARL DAVID, Mother-in-law of EVELYN DAVID
WILLIAM EINHORN, Father of LOUIS EINHORN
IDA KAPPLEMAN, Grandmother of ROCHELLE HOMELSKY
WILLIAM EINHORN, Grandfather of ROBIN KITZMILLER
SAM FRIEDMAN, Father of LAURA REUTERFORS
CLARISSA DRUKER, Sister of CHARLOTTE ZAROFF
HELEN MILLER
EVELYN BENOW
CLARISSA DRUKER
BERNARD COHEN
IDA TUDOR
SYLVIA RAPP FURMAN

July 18, 2014

HELEN ASPIS, Mother-in-law of BARBARA ASPIS
RUTH RUBENSTEIN, Mother of SANDRA DAVIDSON
HELEN ASPIS, Mother-in-law of LOUIS EINHORN
HAROLD MARKOWITZ, Father of MARCIA KARP
HELEN ASPIS, Grandmother of ROBIN KITZMILLER
JOSEPH KLEIN, Father of STEPHEN KLEIN
MICHAEL MARGULIES, Son of CHARLES MARGULIES
ROBERT MEDLEAU, Brother of LINDA MUMFORD
REBECCA RUBIN, Mother of ELLEN OFFENBACH
LINNEA ERIKSSON, Mother of ROLAND REUTERFORS
LAURENCE POSNER, Father-in-law of NEIL ROTHFELD
SAMUEL STEINHOUSE, Grandfather of LYN SAFIAN
NATHAN FISCHER, Father of JACQUELINE SCHINDLER
ALICE SHAIKOWITZ, Mother of SEYMOUR SHAW
PAULA ASHER
CHARLES BIANCO

July 25, 2014

ROSE CASHVAN, Mother of HERBERT CASHVAN
HERBERT COHEN, Father of LARRY COHEN
ANN LOBEL, Mother of SANDY COHEN
GERTRUDE WAGNER, Mother of ELLEN GABIN
RUTH SIVIN, Mother of SHELLY GROSSMAN
LOUIS KAPPLEMAN, Grandfather of ROCHELLE HOMELSKY
RAPHAEL LEVY, Father of JEROME LEVY
WILLIAM KIRSCHNER, Father of NATALIE MELTZER
HOWARD DUNN, Father of SALLY ROSE
GLADYS RUDIN, Mother of HAROLD RUDIN
HERMAN FISCHER, Father of ADDIE UNTERLACK
ESTHER ZION, Mother of DON ZION
LEO GRAY
IDA JONES
MARVIN LEE
NATHAN WEISSBERG

ONEGS SHABBAT

Oneg Shabbat Chairperson

Lyn Safian (634-6013)

lynleestep@mac.com

Our thanks to those people who sponsor Onegs.

Supporting an Oneg Shabbat is a mitzvah. If each member would sponsor just one Oneg a year, our calendar would be full.

Please check the Oneg Shabbat list on the bulletin board and sign up to celebrate your special occasion. If you want information about sponsoring an Oneg, please contact the chairperson.

The committee is willing to shop only for those members who are physically unable to shop for themselves. Thanks for your participation. Also, if you have just signed up, please call the chairperson to confirm the date.

Jun 6 - Linda & James Mumford, their anniversary and Linda's birthday

Jun 13- Larry & Lynnette Martasin, their 60th anniversary

Jun 20- Sandy & Andy Cohen, their 61st anniversary

June 27-Dick Kravitz & Helen McAninch, their 6th anniversary

Jul 4 - Nina Malinak, her grandnephew's birthday

Jul II - Mark & Ronni Neckes, their 49th anniversary

SPONSORS ARE NEEDED FOR THE REMAINING SHABBATS IN JULY

TRIBUTE CARDS

CALL Verdna Kelley at 677-3017, email vjk2338@ij.net or call Eve Gilbert at 642-0707.

Send donation checks to Verdna at

10353 Mercadier Lane, Riverview, FL 33578-7428

Your card will have handwritten personalized sentiments for birthdays, anniversaries, condolences, get well, or any occasion you choose and will be listed in Shalom News.

GET WELL

Bob Cobe from Dick & Marsha Marshall

Bob Guzinsky from Dick & Marsha Marshall

MAZEL TOV

Ralph & Simone Shaw on renewing their Marriage Commitment from Robert & Tzipporah Whiteman

CONDOLENCES

Charna Bogdany in memory of her mother, Sophia Karas, from Robert & Tzipporah Whiteman

Natalie Meltzer in memory of her beloved husband, Len, from Dick Kravitz & Helen McAninch

Delyse Axinn in memory of her beloved husband, Richard, from Larry & Lynnette Martasin, Evelyn Weissman, Jacqueline Schindler, Robert & Tzipporah Whiteman, Cookie Weisman, Stan & Judy Zirowsky, Dick Kravitz & Helen McAninch, Neal & Joy Rosen, Stephen & Hilde Klein, Barbara Aspis, Ellen Stein, Marlis Markovitz, Bob & Lillian Solin

Morris Grossman, in memory of his beloved wife, Elayne, from Bob & Lillian Solin



SUN CITY
GOLF & CARS

BRAND NEW YAMAHA GOLF CARTS

We service all makes of golf carts

BETH ISRAEL SPECIAL
\$100 OFF ON ANY CART

Only Club Car and Yamaha Dealer in Sun City Center

Barry Klawans

1605 Sun City Center Plaza
Sun City Center, FL 33573
Phone (813) 633-7843
Fax (813) 633-7767



CHAMPION
SELF STORAGE

Danielle Budzinski
Property Manager

5120 State Road 674
Wimauma, FL 33598
Phone: 813.634.4851
Fax: 813.634.5285

champion82@championselfstorage.com
www.championselfstorage.com



Join Rabbi Carla Freedman



& Temple Beth Israel
on a memorable adventure to

ISRAEL

October 19 – 30, 2014

\$2,549.00

Land only, Per person
Based on double occupancy



TOUR INCLUDES

- 2 nights at Crowne Plaza in Tel Aviv
- 2 nights at Kibbutz Kfar Giladi in The Galilee
- 5 nights at the Mount Zion in Jerusalem
- All touring and sightseeing per an agreed upon itinerary
 - Breakfast daily
 - Welcome dinner at Maganda
 - Dinner & performance at Nalaga'at Theatre
 - 2 Kibbutz dinners
 - Shabbat dinner in Jerusalem
 - Lunch at Beit Shmuel
 - Lunch & swim at the Dead Sea
 - Farewell dinner in Jerusalem
- Transfers included if arriving/departing with the main group
 - Entrance fees as per itinerary
 - Portage



TOUR HIGHLIGHTS

TEL AVIV

- Hear Ben Gurion declare independence at Independence Hall
- Join up" with paramilitary forces at the Palmach Museum
- Walk among the artists & entertainers at Nachalat Binyamin

THE NORTH

- View the ancient Roman ruins at Caesarea
- See the Bahai Temple & Persian Gardens
- Enjoy a study session on Kabbalah in Safed
- Enjoy wine tasting at the Golan Winery

JERUSALEM

- Enjoy a walking tour of the Old City
 - Visit Yad Vashem
 - Meet with Anat Hoffman
- See the Chagall windows at Hadassah Hospital
- Meet with a reporter from the Jerusalem Post

THE SOUTH

- Ascend Masada
- Hike to the waterfalls of Ein Gedi
 - Float in the Dead Sea

...AND SO MUCH MORE!

Complete this form or register online at:
www.ayelet.com/FreedmanOct2014.aspx

Ayelet Tours, Ltd.

19 Aviation Rd. * Albany, NY 12205 * www.ayelet.com
(800) 237-1517 * Fax (518) 783-6003 * ayelet@ayelet.com



June 2014

Sun	Mon	Tue	Wed	Thu	Fri	Sat
1	2	3	4	5	6	7
		1:30 Hebrew class 3:00 B'nai Torah	8 pm Shavuot Learning & Sun-daes with Rabbi	10 am Shavuot/ Yizkor Services	7:30 Shabbat Svc	12N Torah study
8	9	10 1:30 Hebrew class 3:00 B'nai Torah 7:00 Board mtg	11	12 1:30 mah jongg	13 7:30 Shabbat Svc	14 10am Shabbat Service 12N Torah study
15	16 10am-12n gift shop open Library comm. mtg	17 1:30 Hebrew class 3:00 B'nai Torah	18	19 1:30 mah jongg	20 7:30 Shabbat Svc	21 12N Torah study
22 3pm movie "Paper Clips"	23	24 - 9:30 Sister-hood Board 1:30 Hebrew class 3:00 B'nai Torah	25	26 1:30 mah jongg	27 7:30 Shabbat Svc	28 10am Shabbat Service 12N Torah study
29	30					

July 2014

Sun	Mon	Tue	Wed	Thu	Fri	Sat
		1 3 pm Bnai Torah	2	3 1 pm mah jongg	4 7:30 Shabbat Svc	5 12N Torah study
6	7	8 3 pm Bnai Torah 7pm Board Mtg.	9	10 1 pm mah jongg	11 7:30 Shabbat Svc	12 10 am Shabbat Service 12N Torah study 7pm Trivia night
13	14	15 3 pm Bnai Torah	16	17 1 pm mah jongg	18 7:30 Shabbat Svc	19 12N Torah study
20	21 10am-12n gift shop open Library comm. mtg	22 9:30 Sisterhood Board 3 pm Bnai Torah	23	24 1 pm mah jongg	25 7:30 Shabbat Svc	26 10 am Shabbat Service 12N Torah study
27	28	29 3 pm Bnai Torah	30	31 1 pm mah jongg		



PLEASE WELCOME OUR NEWEST MEMBER:

RAM MEYUHAS

4346 SAPPHIRE SOUND DR.

WIMAUMA, FL 33598

PHONE: (813) 734-7015

EMAIL: rmeyuhas1@gmail.com



Mazel Tov to Sandee & Brad Braddy, who have moved in to their new home at Freedom Plaza.

Their new address is

819 Freedom Plaza Cir, #301, Bldg. 10

Sun City Center, FL 33573

RAYMOND JAMES®

& ASSOCIATES, INC.

"Serving Sun City Center since 1975"

- | | |
|---------------------|---------------------|
| *Stocks | *Trust Service |
| *Corporate Bonds | *Insurance |
| *Municipal Bonds | *IRA-Pension |
| *Financial Planning | *Profit Sharing |
| *Portfolio Analysis | *Mutual Fund |
| *Asset Management | *Certif. of Deposit |

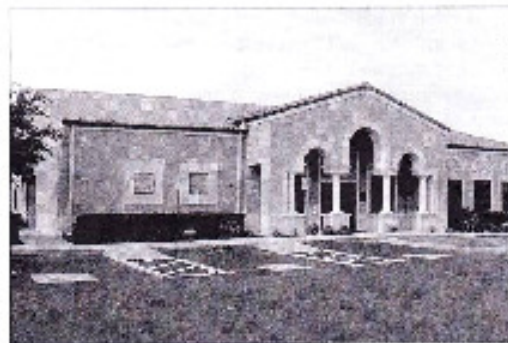
133 S. Pebble Beach Blvd

813-634-5536-Toll Free: (888)719-8091

www.raymondjames.com

We understand and respect the traditions of all faiths, including those of the Jewish faith. No matter what denomination of Judaism you observe, you can rest assured that we can provide the funeral and burial customs that are important to you.

Michael and Yvonne Langjahr
Owners



Sun City Center
Funeral Home

1851 Rickenbacker Drive
Sun City Center, FL 33573
Tel: 813-634-9900

www.SunCityCenterFuneralHome.com

BEEF O'BRADY'S
Est. 1985
Family Sports Pubs

CALL AHEAD FOR PICKUP WINDOW

Ruskin / Sun City Center

723 Cypress Village Blvd

Ph: (813) 633-BEEF (2333)

Fax (813)633-8443

ATTENTION ALL PHONE USERS

WE NEED VOLUNTEERS TO MAKE CALLS TO OTHER CONGREGANTS WHO DON'T HAVE EMAIL TO ALERT THEM OF DEATHS WITHIN THE CONGREGATION. IF YOU ARE WILLING TO MAKE ABOUT 10 PHONE CALLS PLEASE CALL ARNOLD GREENSTEIN AT 642-8639 OR EMAIL HIM AT GD@tampabay.rr.com

So nu? You got some spare time. Give some to Beth Israel.

You have been reading all about the officers of the Temple; now let's look at the Director's jobs. These are the people who support the officers, create the programs, assist the Rabbi, and make your Temple your home away from home. See if you can identify with one of these jobs and then volunteer to lead.

Communications Director: The Communications Director shall coordinate all communications of the Congregation including Shalom News, Publicity, Telephone, Historian & Membership Directory. As Communication Director, you are responsible to attend monthly board meetings and to serve on the bimah as board representative 3 times a year.

Facilities and Maintenance Director: The Director is responsible for the building and physical assets of the Congregation. He/she is responsible for purchasing supplies when necessary, responsible for minor repairs and maintenance throughout the building and for arranging inspections when necessary by outside groups. Facilities/Maintenance Director you are responsible to attend monthly board meetings and to serve on the bimah as board representative 3 times a year.

Membership Director(s): The Director shall recruit new and prospective members for the congregation, assist in their smooth orientation and integration into the general membership. He/she shall create welcoming programs to acquaint new and prospective members with the various functions and programs within the congregation including Shabbat dinners. He/she will greet guests at Shabbat services weekly. As Membership Director, you are responsible to attend monthly board meetings and to serve on the bimah as board representative 3 times a year.

Program Director: The Director coordinates all programming for the Congregation (social, intellectual, spiritual). He/she works closely with the Rabbi to get ideas and implement them. He/she is responsible for our Annual Seder, Rosh Hashanah dinner and the Yom Kippur break fast. The programs are self funding, so you charge for each program accordingly. As Program Director, you are responsible to attend monthly board meetings and to serve on the bimah as board representative 3 times a year.

Ritual Director: The Director, with the Rabbi of Beth Israel, coordinates services for Shabbat evening and morning, High Holidays, and other Festivals. He/she arranges for a Gabbi to assist the Rabbi when Torah is being read; prepares/arranges for Hebrew and English Torah reading handouts. He/she manages the bima duty list of board members making sure honors have been assigned to congregants. As Ritual Director, you are responsible to attend monthly board meetings and to serve on the bimah as board representative 3 times a year.

2014 Book of Remembrance

The High Holidays will be upon us in the fall and it is time to think about the 2014 Book of Remembrance to be used in the Yom Kippur Yizkor and other services. In an attempt to save money we will be trying to do as much as possible via e-mail which will reduce postage charges. We must have your information by the second week in September in order to get the completed book to the printer in time to be ready for Yom Kippur in October.

We will be using the Congregation e-mail. Members who are unfamiliar with the Book of Remembrance or need to review their information are encouraged to look at last year's book which can be found at http://www.jcsc.org/images/stories/pdfs/Book_of_Remembrance_2013.pdf or the copy on the Temple bulletin board.

Members can send the information to us via e-mail at BethIsrael@RMarshal.net. If you wish to repeat the information that was in the 2013 Book of Remembrance, just put "Same as last year" in your e-mail. **If you have changes please send only the changes.** Please send your check to the address below.

For new listings please send the names and relationships (i.e. Joseph White Father of Millicent) and the size: single line, half page or full page.

Donations are as follows:

Single line – maximum of two names minimum of \$5.00

Half page -- minimum of \$50.00

Full page -- minimum of \$100.00

Please send your check made out to Beth Israel to:

Paul Grossman

Beth Israel

P.O. Box 5203

Sun City Center, FL 33571 (Note the zip code)

Please note on the check BoR2014

Questions? Call Marsha or Dick Marshall at 813-633-3338. Thank you.

BETH ISRAEL
The Jewish Congregation of Sun City Center
P. O. Box 5203
Sun City Center, Florida 33571-5203

IN MEMORIAM FOR YISKOR SERVICE

___ Full Page Minimum of \$100.00

___ ½ Page Minimum of \$ 50.00

___ Individual line(s) (\$5 per line—maximum of two names per line (e.g., John and Jane Doe Parents)

Please list the following names of my loved ones in the Book Of Remembrance for the Yiskor Service on Yom Kippur:

Name of Donor: _____

Enclosed is my check for \$_____ as my contribution.

In Memory of

Relationship

_____	_____
_____	_____
_____	_____
_____	_____
_____	_____
_____	_____
_____	_____
_____	_____
_____	_____
_____	_____
_____	_____

Please make your checks payable to: Beth Israel OR Jewish Congregation of SCC. Should you have questions, please call Marsha and Dick Marshall at 813-951-1447 or Paul Grossman at 813-634-8092.

Mail to: Beth Israel
 Attention: Paul Grossman
 P. O. Box 5203
 Sun City Center, FL 33571-5203 (Note zip code)

Email: BethIsrael@RMarshal.net

CONGREGATION OFFICERS & DIRECTORS

Rabbi Carla Freedman

Ellen Stein	President
Joanne Sudman	1st Vice President
Arnold Greensteinn	2nd Vice President
Elizabeth Jacobs	Treasurer
Paul Grossman	Financial Secretary
Maggi Guzinsky	Recording Secretary
Nina Malinak	Corresponding Secretary
Delyse Axinn	Communications
Dick Marshall	Facilities
Shelly Grossman	Co-Membership
Sheila Rubinstein	Co-Membership
Cheryl Kaplan	Program
Fred Levine	Ritual Director
Carol Balent	Ways & Means
Sandra Hurwitz	President-Sisterhood
Paul Grossman	President-Mens's Club
Delyse Axinn	Chaplain

**Beth Israel is a member of the Sun City Center,
South Shore, and Riverview Chambers of Commerce.**

BETH ISRAEL

THE JEWISH CONGREGATION OF SUN CITY CENTER

P. O. BOX 5203

SUN CITY CENTER, FL 33571

FIRST CLASS

SUMMER NEWSLETTER